

**CAMBRO** **StoreSafe**<sup>®</sup>  
STORE FRESH

**Food-grade Supplies to Preserve  
Cannabis Quality and Safety**

National Cannabis Industry  
Association Member





**Cambro Manufacturing makes supplies and equipment that chefs and foodservice professionals have trusted for more than 60 years to keep their kitchens operating smoothly. Now, cannabis producers can experience the Cambro difference for themselves. From grow operations to extraction facilities, keep your cannabis products safely contained to prevent cross-contamination during any part of the cannabis production process with Cambro product solutions.**

**Growing | Drying | Curing | Storage | Distillation | Delivery**

**All Cambro products are made from food-grade, FDA approved plastics, which are safer and more affordable than glass, lighter in weight, and easier to stack and store when not in use.**

**Polypropylene:**

A translucent, inert, BPA-free plastic.

Temperature Range:  
-40°F to 160°F



**Polycarbonate:**

Clear and virtually unbreakable, will not crack, bend or dent.

Temperature Range:  
-40°F to 210°F



**Polyethylene:**

An opaque, inert, BPA-free plastic.

Temperature Range:  
-40°F to 160°F





# Processing and Storage

Cambro storage containers are perfect for storing bulk flower or shake, for distillation and evaporation, or small-batch processing.

Full Size Food Pans    W 12.75" x L 20.88"



	Translucent Food Pans	Camwear® Food Pans
Depth	Polypropylene	Polycarbonate
4"	14PP190	14CW135
6"	16PP190	16CW135
8"	18PP190	18CW135
Seal Cover	10PPCWSC190	10PPCWSC190
Flat Lid	10PPCH190	10CWC135
GripLid®	—	10CWGL135

Storage Boxes    W 18" x L 26"



	Poly Storage Boxes	Camwear® Storage Boxes
Depth	Polyethylene	Polycarbonate
9"	18269P148	18269CW135
12"	182612P148	182612CW135
15"	182615P148	182615CW135
Flat Lid	1826CP148	1826CCW135
SlidingLid™	—	1826SCCW135



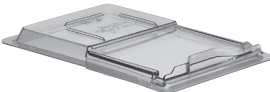
## Lids and Covers



**Seal Cover for Food Pans**  
Dual inner/outer seals restrict airflow into and out of the container, keeping contents fresher longer.



**GripLid for Food Pans**  
Features a molded-in polyurethane gasket to reduce airflow by 90% and prevent spills.



**SlidingLid for Storage Boxes**  
Easy access to contents without removing the lid.



**Flat Cover for Storage Boxes**  
Keeps contents covered and allows for easy stacking of boxes.



## Accessories



Drain Shelves



Colander Pans

Additional sizes available. Visit [www.cambro.com](http://www.cambro.com) for full product line.

# Processing and Storage

Cambro storage containers are perfect for storing bulk flower or shake, for distillation and evaporation, or small-batch processing.

## Square Containers

6 qt.: **W** 8.38" x **L** 8.38" x **H** 7.25"    8 qt.: **W** 8.38" x **L** 8.38" x **H** 9.13"



**CamSquare®  
Storage  
Containers**

**Capacity**  
**6 qt.** 6SFSCW135  
**8 qt.** 8SFSCW135

**Reg. Cover** SFC6451  
**Seal Cover** SFC6SCPP190



**Translucent  
Square Storage  
Containers**

**Capacity**  
**6 qt.** 6SFSP190  
**8 qt.** 8SFSP190

**Reg. Cover** SFC6451  
**Seal Cover** —



**Poly  
Square Storage  
Containers**

**Capacity**  
**6 qt.** 6SFSP148  
**8 qt.** 8SFSP148

**Reg. Cover** SFC6451  
**Seal Cover** —

## Round Containers

6 qt.: **Dia.** 9.94" x **H** 7.94"    8 qt.: **Dia.** 9.94" x **H** 10.88"



**Camwear®  
Round  
Containers**

**Capacity**  
**6 qt.** RFSCW6135  
**8 qt.** RFSCW8135

**Reg. Cover** RFSCWC6135  
**Seal Cover** RFS6SCPP190



**Translucent  
Round  
Containers**

**Capacity**  
**6 qt.** RFS6PP190  
**8 qt.** RFS8PP190

**Reg. Cover** RFSC6PP190  
**Seal Cover** —



**Poly  
Round  
Containers**

**Capacity**  
**6 qt.** RFS6148  
**8 qt.** RFS8148

**Reg. Cover** RFSC6148  
**Seal Cover** —



## Storage Container Lids



**Regular Cover**  
Snap-tight with thumb  
tab for easy removal.



**Seal Cover**  
Inner and outer seals restrict  
airflow into and out of the  
container, keeping contents  
fresher longer.

## Accessories



Drain Shelves



Colander Pans

Additional sizes available. Visit [www.cambro.com](http://www.cambro.com) for full product line.





### **CamBox® Bus Boxes**

Polyethylene

**1520CBPF110**

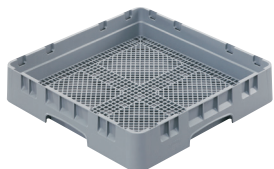
**W 15.32" x L 19.94" x H 4.94"**

**1520CBCP148** Cover

**1722CBP110**

**W 16.88" x L 21.88" x H 4.75"**

**1722CBCP148** Cover



### **Camrack® Perforated Rack**

Use to sift cannabis for kief and terpenes, with or without dry ice.

**FR258151**

**W 19.25" x L 19.25" x H 4"**



### **Camrack Cover**

Cover and transport your sifting racks with ease.

**DRC2020180**

Fits Camrack Perforated Racks

**W 19.63" x L 19.63" x H 0.94"**



### **Camdolly®**

Comes with four 3.5" swivel casters, no brakes.

**CDR2020151**

**W 20.88" x L 20.88"**





# Delivery and Transport

Protect edibles from melting or degrading with these easy-to-use carriers.

## Cam GoBox®

Cam GoBox insulated carriers are ultra-lightweight, durable and affordable.

Made from Expanded Polypropylene (EPP), a lightweight, chemically inert, high-performance foam insulating material.

Temperature Range: -40°F to 230°F



### EPP180SW110

Top Loader

Exterior Dimensions:

**L 23.6" x W 15.7" x H 12.4"**

Interior Dimensions:

**L 21.2" x W 13.3" x H 10"**

Volume: 48.6 qt.



### EPP280RDSTSW110

Top Loader with

convenient carrying strap

Exterior Dimensions:

**L 15.4" x W 13" x H 12.4"**

Interior Dimensions:

**L 13" x W 10.6" x H 10"**

Volume: 23.6 qt.



### EPP400110

Front Loader

Exterior Dimensions:

**L 25.2" x W 17.3" x H 24.6"**

Interior Dimensions:

**L 21" x W 13" x H 20.7"**

Volume: 90.9 qt.

## Camchillers®

Designed to extend cold holding time for Cam GoBox contents. Freeze flat overnight and place on top of your carrier.



### CP3253443

Fits EPP180SW, EPP400

**L 20.9" x W 12.8" x H 1.2"**

### CP2632443

Fits EPP280SW

**L 12.8" x W 10.4" x H 1.2"**

## Camchiller Insert Kit

Built-in cut outs support cold transfer while protecting contents from condensation. Kit includes extender insert and chiller.



## EPPCTSPKG

Fits EPP180SW

Exterior Dimensions:

**L 23.6" x W 15.7" x H 3.4"**

Interior Dimensions:

**L 21.1" x W 13.3" x H 1.3"**

## Transport Dolly

Interstack the EPP400 or EPP180 for easy transporting. Comes with 4 swivel casters, two with brake.



### CD3253EPP158

Load Capacity: 551 lbs.

## KD Service Cart

Four 4" swivel casters with no brake.



## BC331KD110

Overall Dimensions:

**L 32.88" x W 16.25" x H 38"**

Shelf Dimensions:

**L 24.38" x W 15.88" x H 11.75"**



# Organization and Inventory

Organize and inventory your cannabis products and derivatives.

## Camshelving® Premium Series

Efficiently store and organize your inventory with Camshelving Premium Series. Backed by a lifetime warranty against rust and corrosion, it is easy to clean, assemble and adjust. Configure your Camshelving to fit any storage space. Take advantage of Cambro's design service to create a custom shelving layout that perfectly fits your needs.

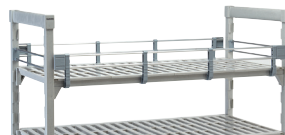
- Stationary or Mobile units available.
- 100% guarantee against rust and corrosion.
- Withstands all environments: from -36°F to 190°F.
- Available accessories help create the perfect storage system.



## Accessories



ID Tags



Shelf Rails



Security Cages

## Versa Organizer

Polyethylene

W 5" x D 12" x H 4.25"

Racks are available in 6, 8, 9, or 12 bin capacities.



## Flex Station

Hold and display items for easy access. Move the rack anywhere you need it to go.

CPMU244867FXPKG

D 24" x L 48" x H 67"

## Sanitation

### Handwash Station

Meet health department requirements with accessible handwashing in any location.

### HWAPR110

Paper Towel Roll Holder and Soap Dispenser.



### 500LCD

5-Gallon Water Reservoir  
W 9" x D 16.5" x H 24.25"





**Find Cambro products in your area: [www.cambro.com/Wheretobuy](http://www.cambro.com/Wheretobuy)**  
**Cambro representatives are available to discuss product solutions with you.**  
**Contact us at [cannabis@cambro.com](mailto:cannabis@cambro.com)**

**CAMBRO**  
TRUSTED FOR GENERATIONS™  
[www.cambro.com](http://www.cambro.com)

Telephone: (714) 848-1555 Toll Free: (800) 854-7631 Customer Service: (800) 833-3003  
© Cambro Manufacturing Company 5801 Skylab Road, Huntington Beach, CA 92647  
LIT1825 Printed in U.S.A. 11/18

**National Cannabis Industry  
Association Member**

